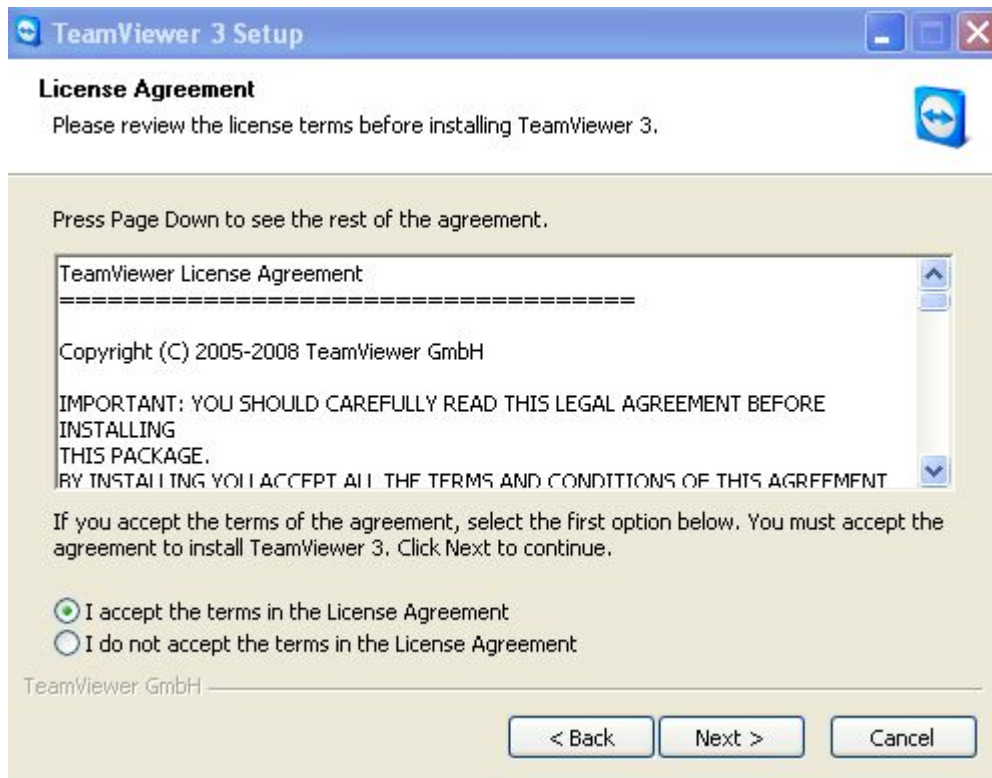


Remote Assistance manual

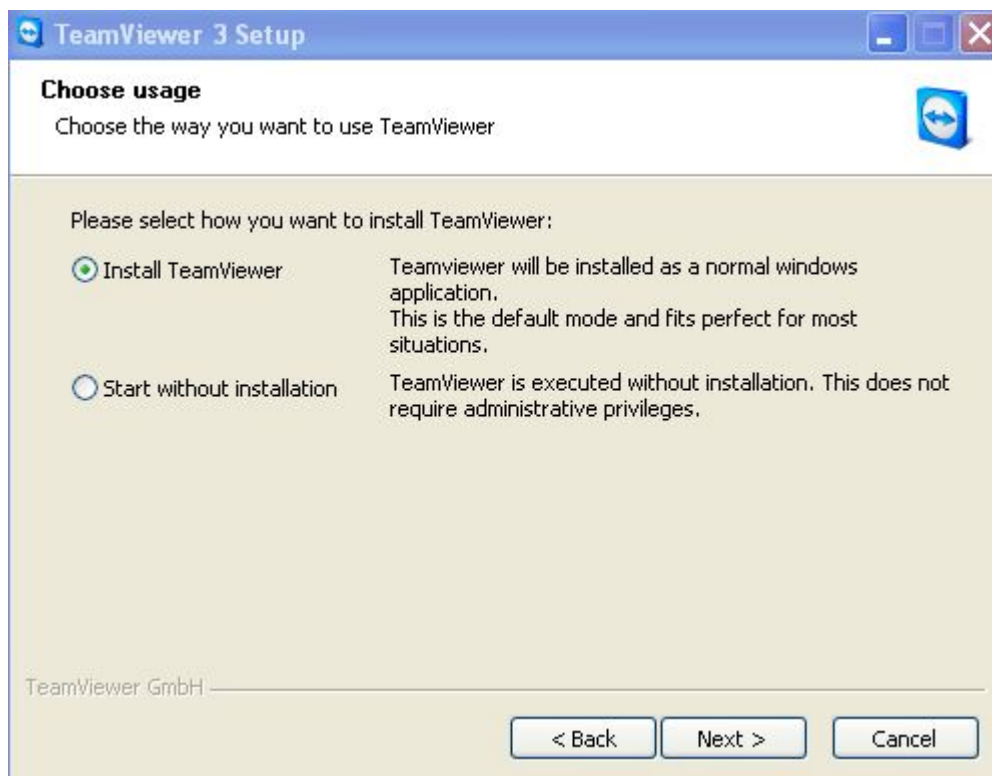
1. Click the Remote Assistance icon and download the file from the web site .Decompress the file to a folder .Double click the teamviewer_setup.exe and install the remote support software .Click next to continue.



2. Choose the following option and click next to continue



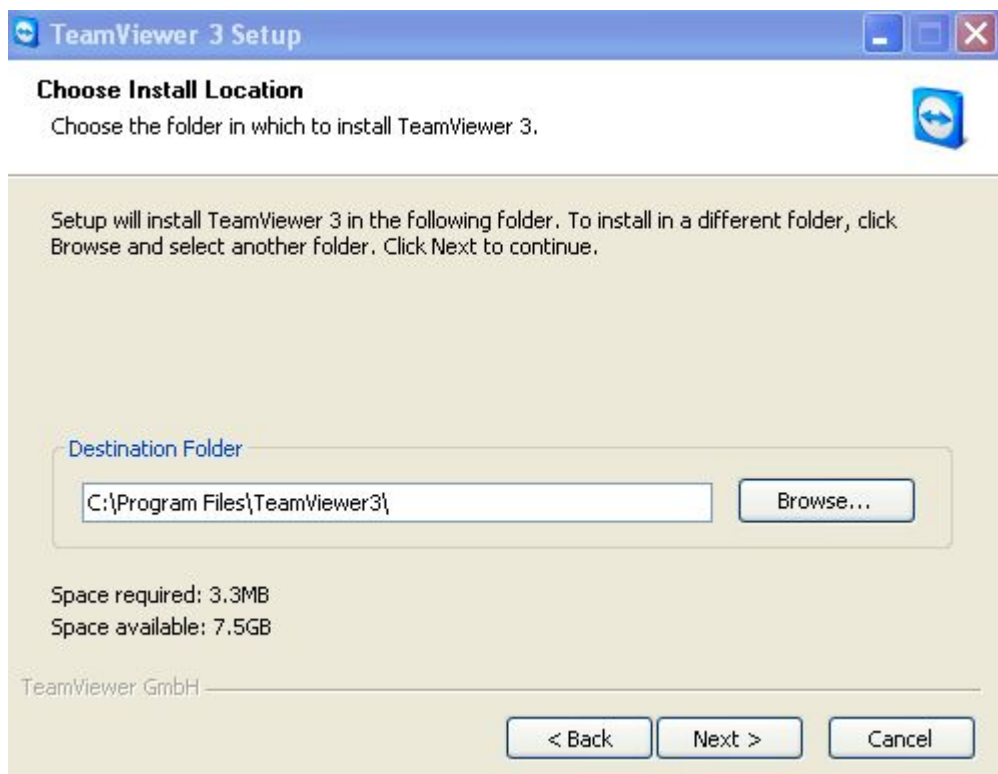
3. Choose the following option and click the next button



4. Ignore the following option and click the next button .

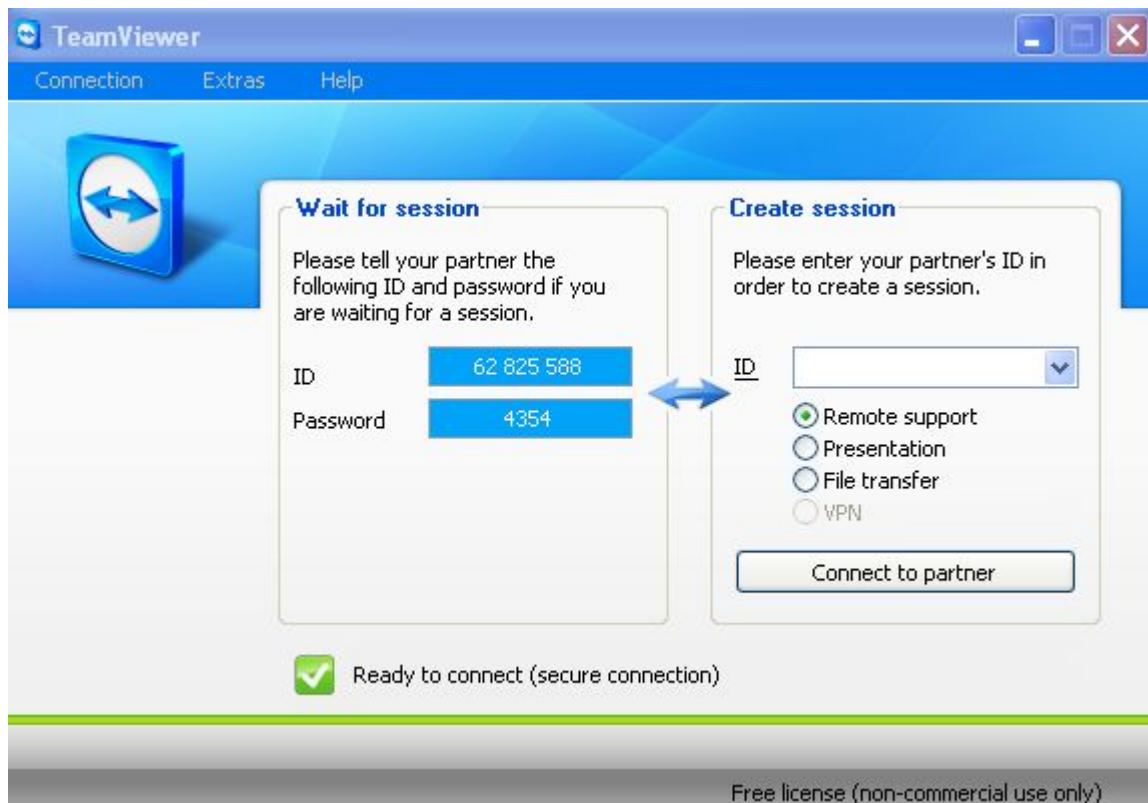


5. Click next until the operation finished.





6. Run the TeamView application on the desktop .Wait for a moment to get a session ID and a password,You can get a ID and a password just like show of the following picture .



7. Send the ID and the password to your remote support. They can connect to your computer with the id/password. And they can do something to resolve your problem. Enjoy the support of MIS guys everywhere!